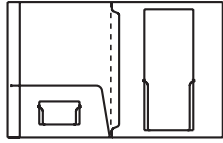


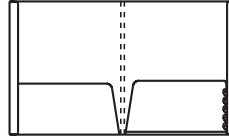
CUSTOM DESIGN FOLDERS

CALL FOR QUOTATION



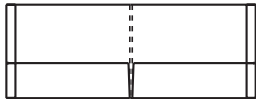
3811 - Style H & J

9 11/16" x 11 3/4" with a glued, reinforced 9" x 4 1/2" pocket on the inside left and a 9 9/16" vertical, reinforced literature pocket on the inside right. The back panel is 11/16" wider than front panel providing an 11/16" tab extension.



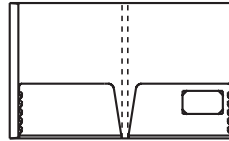
168 - Style O

9 13/16" x 11 3/4" with two glued 4 1/2" pockets. The pocket on the inside left is flat while the inside right pocket allows for 1/4" expansion.



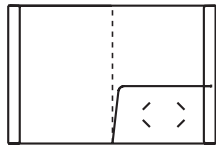
673 - Style I

11 15/16" x 9" with two 3 3/8" glued pockets. This folder also has a 1/8" spine and reinforced edges.



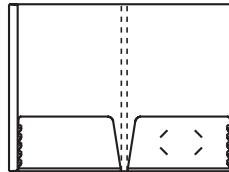
177 - Style O

9 3/4" x 11 3/4" with two 4 1/2" horizontal pockets each expanding to 1/4".



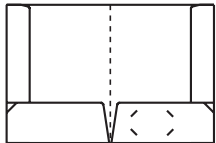
1378 - Style I

9" x 12" with a glued 5" pocket on the inside right panel. Both outside edges are reinforced.



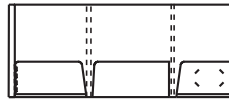
656 - Style O

9 3/4" x 14 1/2" with two glued, 1/4" capacity pockets.



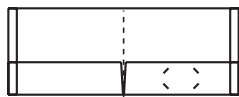
1990 - Style I

12" x 9" with two unglued 3 1/2" pockets



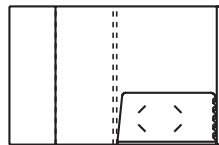
3003 - Style O

9 7/8" x 11 3/4" with three horizontal pockets. The outside pockets are 4 1/8" tall and allow for 3/8" expansion. The center flat pocket is 4 1/2" tall. Overall, the folder expands to 3/4"



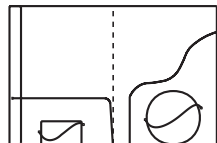
1991 - Style I

9" x 12" with two 3 3/8" pockets. This folder has reinforced edges.



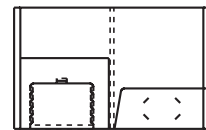
3830 - Style O

9 1/2" x 12" with a glued 4" vertical pocket on the inside left and a 4 1/4" horizontal, 1/4" auto-expansion pocket on the inside right. The back panel is 1/2" wider than the front panel providing a 1/2" tab extension.



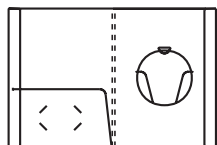
3238 - Style I

9" x 12" with a glued 4" pocket on the inside left panel. The inside right panel contains an irregularly shaped pocket with a CD slit.



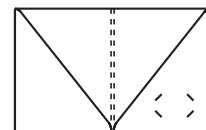
3777 - Style P

9 1/2" x 12" folder with a 4" horizontal pocket in the inside right and an auto-expansion pocket in the inside left to hold a CD jewel case. Spine capacity is 3/8"



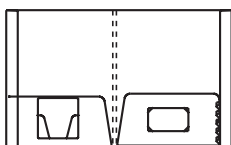
4211 - Style I

9" x 12" with a glued 5" pocket on the inside left. The inside right panel contains a CD holder. Outside edges are reinforced.



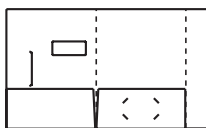
2566 - Style Q

9 1/2" x 12" folder with full height diagonal pockets. Folder also allows for 1/8" capacity in the spine.



819 - Style J

10" x 12" with two glued 4 1/2" horizontal pockets. The pocket on the inside right expands to 1/4" capacity. The back panel is 3/4" wider than the front panel providing a 3/4" tab extension.



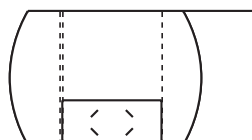
2955 - Style W

9" x 12" with two glued 4" pockets. This folder has a wrap-around flap that tucks into a slot on the front cover.



2433 - Style L

9" x 12" with two 3 5/8" glued pockets. This folder has two detachable rotary file cards on the inside left pocket.

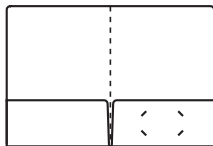


3391 - Style W

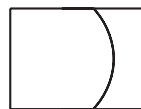
9" x 12" with a glued 4" pocket on the inside left. The inside right panel contains a 7 1/8" vertical pocket. Closure is provided by a 4 1/2" wrap-around panel

CUSTOM DESIGN FOLDERS

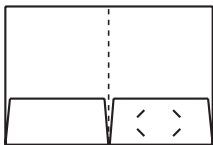
CALL FOR QUOTATION



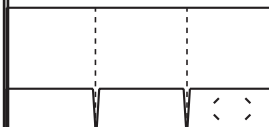
397 - Style A
9" x 12" with two glued 4" pockets.



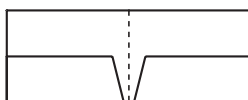
2590 - DH & M
8 3/4" x 12" with a 1/4" box pocket, 7 1/2" tall.



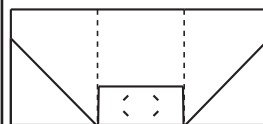
404 (3248) - Style A
9" x 12" with two unglued 4" pockets.



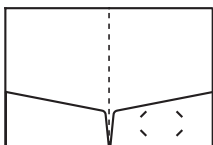
2661 - Style F
9" x 12" three panel pocket folder. Pockets are 4" tall.



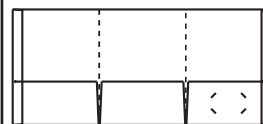
2377 - Style A
12" x 9" with two glued 4 1/2" v-cut pockets.



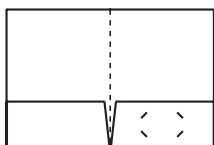
2969 - F
9" X 12" with three panels. The outer two panels contain 9" diagonal pockets while the center panel has an unglued 4" pocket.



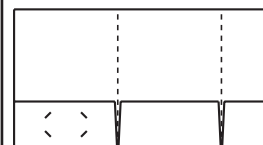
2629 - Style A
9" x 12" with two angled, v-cut 4 3/4" pockets.



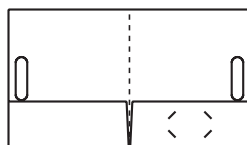
3762 - F
9" x 12" with three panels and three 4 1/2" pockets. The outer two pockets are glued while the center pocket is unglued. The outer edges are reinforced.



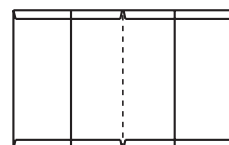
2855 - Style A
9" x 12" with two unglued 4" pockets.



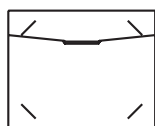
4067 - F
9" x 12" with three panels and three 4" pockets. The outer two pockets are glued while the center pocket is unglued.



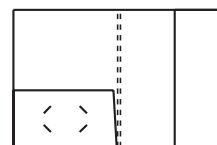
3727 - Style A
10 1/2" x 12" with two glued 4" pockets. This folder contains a diecut handle.



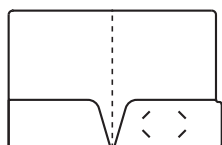
2183 - Style H
9 1/2" x 12" with two glued 5" horizontal pockets. This folder is reinforced at both the top and bottom.



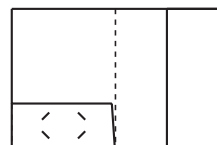
3014 - Style CH
12 3/4" x 10 1/8" certificate holder with tuck flap accommodates either an 8 1/2" x 11" or 8" x 10" certificate.



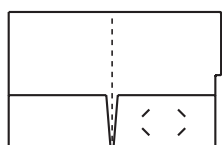
2448 - Style H
9" x 12" with a glued 4" horizontal pocket on the inside left and a glued 4 1/2" vertical pocket on the inside right.



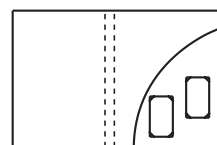
407 - Style D
9" x 12" with two glued 4 1/4" v-cut pockets, a 1/2" x 4 1/4" file tab in third position.



2486 - Style H
9" x 12" with a glued 4" horizontal pocket on the inside left and a glued 4 1/2" vertical pocket on the inside right.



357 - Style D
9" x 11 3/4" with two glued 4 3/4" pockets. This folder has a 5 1/2" file tab on the back panel.



4295 - Style H
9" x 12" with an 8" vertical pocket on the inside left and 7 1/2" rounded pocket.